

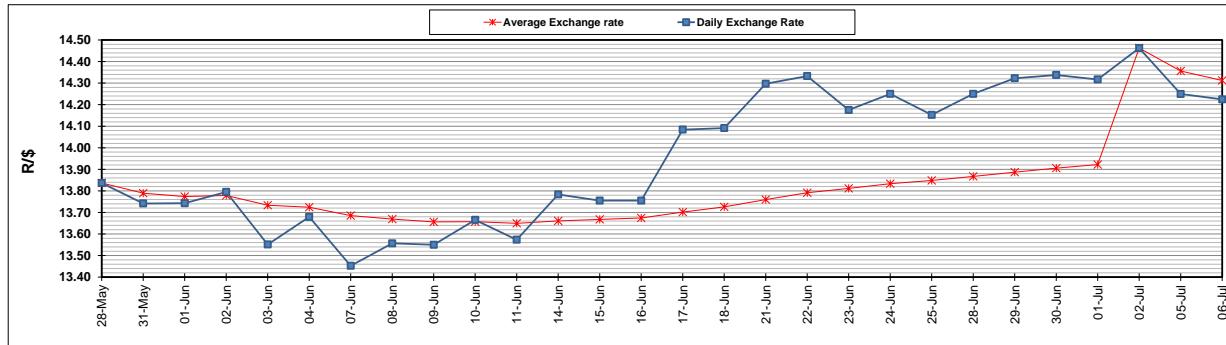
	PETROL 95 ULP	PETROL 93 ULP & LRP	DIESEL 0.05%	DIESEL 0.005%	ILL. PAR.
GAUTENG PUMP PRICE (SA c/l) AS FROM 07/07/2021	1,739.000	1,720.000	-	-	-
WHOLESALE PRICE (SA c/l) AS FROM 07/07/2021	-	-	1,508.620	1,512.020	913.488
SINGLE NATIONAL MAXIMUM RETAIL PRICE	-	-	-	-	1,150.000
BASIC FUEL PRICE - 06/07/2021 (SA c/l)	821.435	807.083	761.715	764.468	739.277
PRESS RELEASE CONTRIBUTION TO BFP 02/07/2021 - 06/07/2021 (SA c/l)	717.170	705.170	679.630	684.030	664.128
UNIT OVER/(UNDER) RECOVERY - 06/07/2021 (SA c/l)	(104.265)	(101.913)	(82.085)	(80.438)	(75.149)
AVERAGE BASIC FUEL PRICE 02/07/2021 - 06/07/2021	822.978	809.213	767.361	770.522	744.230
AVERAGE UNIT OVER/(UNDER) RECOVERY 02/07/2021 - 06/07/2021	(105.808)	(104.043)	(87.731)	(86.492)	(80.102)

ANALYSIS MOVEMENT OF AVERAGE OVER/(UNDER) RECOVERY

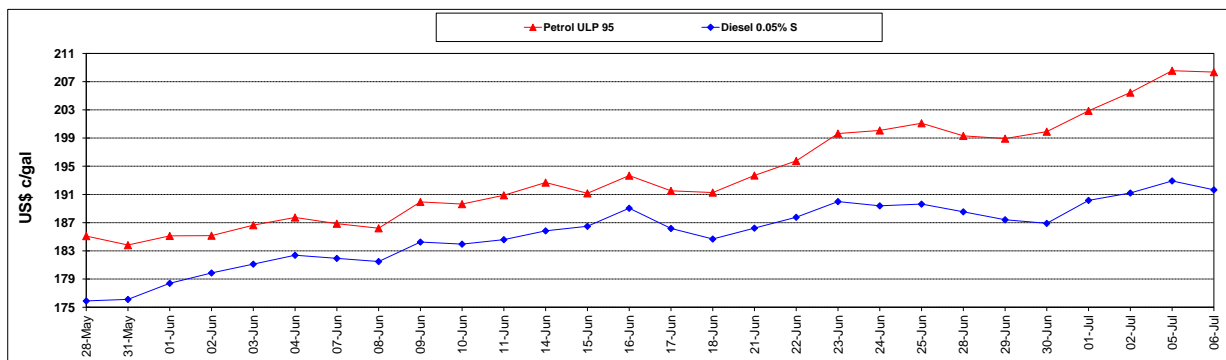
	PETROL 95	PETROL 93	DIESEL 0.05%	DIESEL 0.005%	ILL. PAR.
- MOVEMENT IN INTERNATIONAL PRODUCT PRICES	(83.365)	(81.975)	(66.805)	(65.480)	(59.807)
- MOVEMENT IN EXCHANGE RATE	(22.443)	(22.068)	(20.926)	(21.012)	(20.295)
AVERAGE UNIT OVER/(UNDER) RECOVERY 02/07/2021 - 06/07/2021	(105.808)	(104.043)	(87.731)	(86.492)	(80.102)

R/\$ EXCHANGE RATE - (R/\$14.2245- 06/07/2021)

EXCHANGE RATE USED IN BASIC FUEL PRICE



INTERNATIONAL PRODUCT PRICES OF BASKET USED IN BASIC FUEL PRICE



BASIC FUEL PRICE IN SA CENTS PER LITRE

